

PowerMAN Power Manager

PowerMAN Power Manager Overview

Release 5.2.4 July 2011

"We estimate this straightforward project, will save the Trust more than 350 tonnes of CO₂ and £70,000 per year...Direct financial savings are achieved by reducing the energy being used by computers being left idle by users." - Phil Brennan, Estates Director, Sheffield NHS Teaching Hospitals

Data Synergy PowerMAN Power Manager is an advanced software product giving organisations of all sizes a simple, effective and uniform solution to manage PC running costs. PowerMAN complements the built-in power management features of Microsoft Windows® by providing:

- **Comprehensive, centralised, configuration of PC power management**
- **Web-based, enterprise-wide reporting of PC usage and costs**

PowerMAN builds upon the features available in the Windows operating system to deliver power management that maximizes savings whilst avoiding any loss of productivity. The software's innovative approach allows PC power features to be simply managed using familiar Windows tools. This dramatically reduces implementation time and delivers rapid results. PowerMAN's unique web-based graphical system allows both IT and non-IT staff to monitor progress and identify areas for improvement.

"I only know one power management product that truly addresses our problems...PowerMAN" - Lisa Nelson, University of Liverpool

PowerMAN is a best of breed solution. The unique combination of effective power management **control** and **measurement reporting** greatly enhances the available savings:



PowerMAN Benefits

"This is a great opportunity to save a whole lot of money, but at a low cost" - Merry Rankin, Director of the Office of Sustainability, Iowa State University

PowerMAN is very cost effective and will deliver effective power management whilst maintaining user productivity. The solution will deliver the following business benefits:

- Save up to 70% of PC energy costs
- Save up to £60 per annum per PC
- Flexible solution that overcomes common barriers to energy saving
- Pay for itself in weeks NOT months

The product is available with a **free 30 day, no-obligation, evaluation**. This will allow you to fully understand the powerful range of features available and measure the potential savings in your organisation. The evaluation is unlimited and we encourage you to use it on as many workstations as possible. The savings achievable can be estimated using our free, on-line, [savings calculator](#).

PowerMAN Power Manager

The management software is highly flexible and offers numerous power management policy options:

- Rapid deployment using almost any industry standard technique
- Flexible policies per-user, per-workstation or per-group
- Mix/match techniques to work alongside user requirements and maximize productivity
- Built-in wake-up support for patch management, anti-virus scans, and updates
- Minimally intrusive to users and includes an optional user override tool
- Uniform solution for all supported operating systems

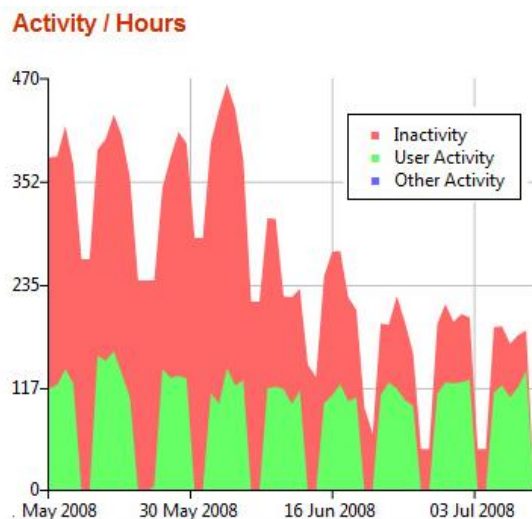
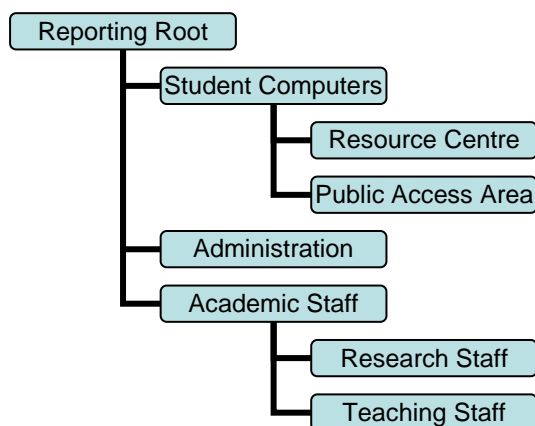
The optional reporting suite provides:

- Management insight of workstation activity, waste and areas of best practice
- Reporting per area, department or physical location
- Measurement by time, estimated cost or CO₂ equivalence
- Informed decision making based upon reality and **NOT** guess work
- Optional hosted solution for ultra-rapid setup and low implementation cost

Enterprise PC Power Reporting

The optional PowerMAN web-based reporting solution is available as either **standalone, on-premise, software** or as a **hosted reporting service**. The system reports workstation power usage related information in a variety of easily accessible graphical and tabular formats. Both reporting solutions offer exactly the same reporting features:

- The **hosted (cloud) reporting service** can be setup in minutes and will securely report power statistics directly to Data Synergy's servers. This removes the need for a local server and associated backups. Hosted reporting is **included free for the first year** with all direct PowerMAN purchases.
- The **on-premise PowerMAN Enterprise Server** reporting software is particularly suitable for larger organisations and keeps all information in-house. The system offers an open database model that is ideal for further integration or development of custom queries.



A live demonstration of the reporting solution features is available on the [Data Synergy website](#).

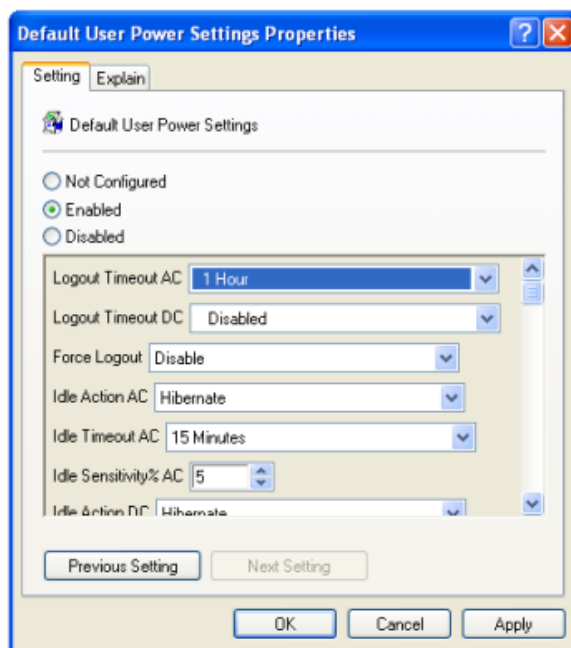
PowerMAN Power Manager

The reporting solution provides:

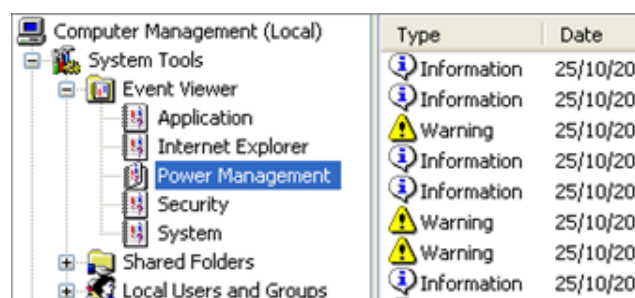
- On-going measurement of efficiency and waste over weeks, months or even years
- Reports true hours/minutes of activity and estimated cost and CO₂ equivalents
- Groups computers by area, use or location, display summary information and drill-down to individual PCs
- Ranks computers by inactivity level and highlights the most and least wasteful computers
- Displays data graphically and allows data download in Excel compatible format
- Provides multiple access security levels and only collects anonymous data. Does not create any privacy or data confidentiality issues and provides
- Minimal network overhead and storage requirements. There is no practical limit to historic data retention.

Technical Features and Requirements

PowerMAN is supported on Windows 2000 and later. The software uses a small agent which may be quickly deployed to each workstation:



- Simple deployment via either standard MSI or single-EXE file. Less than 1MB on-disk required
- Deploy via GPO/AD, ZEN, SCCM, SMS, XCOPY or similar
- ADM/ADMX supplied - Configure via Group Policy, ZEN, SCCM or even direct Registry settings
- Define separate policies per-user, per-computer, group or time of day
- Configure timeouts for logout, sleep, hibernate, and power-off
- Schedule wake-up, sleep, hibernate or power-off
- Distinct policies for when nobody is logged on



- Enforce policies, prevent unauthorised changes and override problem applications preventing PC 'insomnia'
- Protect critical applications or files
- Optional opt-out by user and computer.
- Permit authorised users to self opt-in/out to power management

PowerMAN Power Manager

The PowerMAN reporting solution requires less than 0.5KB of network bandwidth per workstation per day. The optional on-premise, PowerMAN Enterprise Server, reporting software is highly scalable and supports a minimum of 100,000 client computers. The software does not normally require a dedicated server and will work in a virtualised environment. The server software requires the following:

- Windows Server 2003 or later (x86 or x86-64) with at least 2GB of RAM. Larger installations may require more RAM.
- Approximately 1MB of data storage per client computer per year. e.g. 20,000 PCs will require approximately 20GB of storage.
- Microsoft® SQL Server Standard Edition 2005 or later. Smaller deployments may also use the free SQL Express Edition

We also offer a range of [services](#) to help deploy, integrate, and customise PowerMAN in your organisation.

Better than Windows alone

PowerMAN leads the market because it significantly enhances the features available from Windows alone. This is because:

- Windows XP and earlier do not provide any built-in, centrally configured, power management.
- Windows® Vista / Windows® 7 **only provide a single timeout-based power policy to be defined for all users on a particular computer.** This policy applies at all times and can be changed by any user and remains in effect even when the user logs off. The policy may be easily circumvented by rogue applications causing 'PC Insomnia'

PowerMAN offers many more comprehensive features beyond those present in Windows alone. The following table highlights the key features of PowerMAN compared to Windows XP, Windows Vista/Windows 7 and the Energy Star EZ GPO tool:

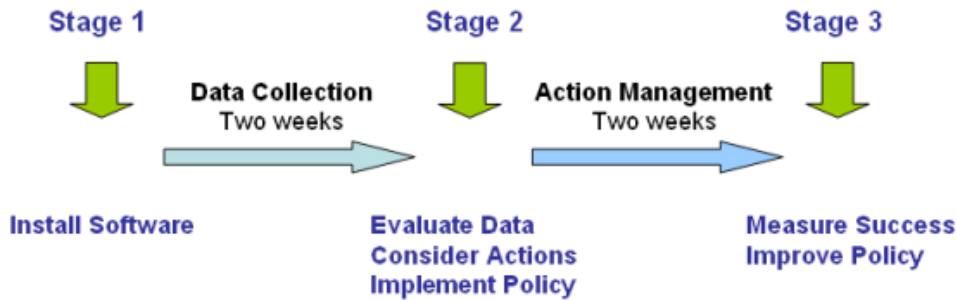
Feature	Win XP	Win Vista/7	EZ GPO	PowerMAN
Configure power features via Group Policy	No	Basic	Basic	Advanced
Report power usage per PC/Site	No	No	No	Yes
Configure policy per user	Yes	No	Yes	Yes
Configure policy per PC	No	Yes	Yes	Yes
Distinct policy for no logged-on user	No	No	Yes	Yes
Enforce policy (prevent 'PC Insomnia')	No	No	No	Yes
Power Management Event Log	No	No	No	Yes
Prevent unauthorised policy changes	Yes	Yes	No	Yes
Optional user override tool	No	No	No	Yes
Supports logout/power-off	No	No	No	Yes
Supports scheduled sleep/shutdown	No	No	No	Yes
Supports scheduled wake-up	No	No	No	Yes
Remote ad-hoc wake-up	No	No	No	Yes
Full support for Windows® Vista/7	NA	NA	No	Yes
Regular updates available	NA	NA	No	Yes
Fully supported via email and telephone	NA	NA	No	Yes

PowerMAN Power Manager

Evaluate Free Today

We are confident PowerMAN will save you money but we know you will want to see this for yourself. The product is available with a **free 30 day, no-obligation, evaluation**.

The evaluation will allow you to fully understand the powerful range of features available and measure the potential savings in your organisation. The evaluation is **unlimited** and we encourage you to use it on as many representative workstations as possible. The typical evaluation cycle is:



Please talk to your Sales Representative to arrange your PowerMAN evaluation today.

Complementary Tools

Data Synergy provides a range of related software. The following tools complement PowerMAN:

- [WakeMyPC](#) provides a web-based, user-driven, remote desktop access gateway. This allows users to wake their own workstations when required for remote access. WakeMyPC is the ideal companion for PowerMAN and used together will maximize the savings achieved.
- Free [WOLMAN command-line](#) tool for investigating and debugging WoL network issues. This is included with the WakeMyPC Server and is also available directly from the Data Synergy website
- **DMCMOS32 utility** for configuring BIOS features, such as WoL, on large numbers of similar computers

Further Information

To find out more about **Data Synergy PowerMAN** please talk to your Sales Representative or authorised reseller. Alternatively please read the following documents available on the Data Synergy website:

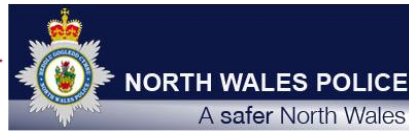
- [PowerMAN Administrator Guide](#) – provides full technical details and several installation walk-throughs
- [PowerMAN Reporting Guide](#) - explains how to use the WakeMyPC Server software.
- [PowerMAN Enterprise Server Guide](#) – explains how to deploy the on-premise reporting suite
- [PowerMAN FAQ](#) – Answers frequently asked product questions

Our Customers

Data Synergy PowerMAN is already used successfully by a large number of both public and private sector customers. Some examples include:

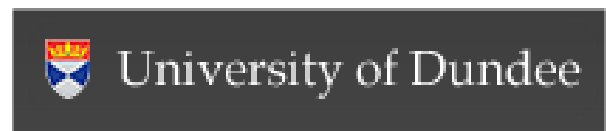


www.sro.vic.gov.au



IOWA STATE UNIVERSITY

Manchester Metropolitan University



The University of Nottingham



Rushcliffe Borough Council



About Data Synergy



Data Synergy is a British company based in Sheffield. We have over ten years' experience developing and supporting software solutions for enterprise PC deployment and management. We do not resell other vendors' products and do all of our development, sales and support from our UK base.

Our products have evolved through listening to customer ideas and applying our unrivalled knowledge of PC internals. If you have a suggestion for a new product or feature we would love to talk to you.

Data Synergy UK Ltd
Cooper Buildings
Sheffield Technology Parks
Arundel Street
Sheffield
S1 2NS

Website: www.datasynergy.co.uk
Email: sales@datasynergy.co.uk
Telephone: 08456 435 035

Registered in England and Wales
Company Number 06682095
VAT Registration GB 939 7559 56