

PowerMAN New Features Guide v5.2

Release 5.2.3 March 2011

Overview

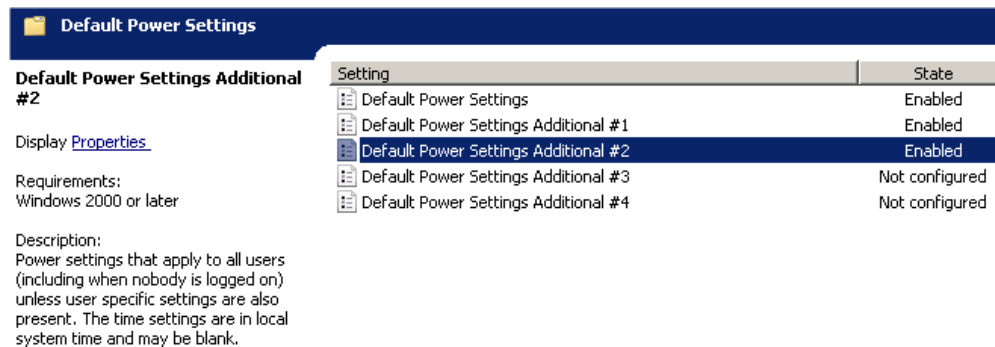
PowerMAN v5.2 includes several new features. This document provides a brief explanation of these features and is intended for System Administrators already familiar with PowerMAN.

The majority of the new features present have followed feedback supplied by our customers. We remain very grateful to those sites for all the testing and feedback they have provided and hope they will find this release the most functional and reliable yet.

New features in PowerMAN v5.2

1. PowerMAN now supports multiple power settings in the following policy areas:
 - a. Default User settings
 - b. No User settings
 - c. Specific User settings
 - d. Scheduled shutdown/sleep/hibernate events
 - e. Scheduled wake-up events
 - f. Protected times

To maintain backwards compatibility with PowerMAN v5.1 the additional policies have been given a numeric suffix. Policies are always processed in ascending numerical order and the first applicable policy is applied.



Default Power Settings

Setting	State
Default Power Settings	Enabled
Default Power Settings Additional #1	Enabled
Default Power Settings Additional #2	Enabled
Default Power Settings Additional #3	Not configured
Default Power Settings Additional #4	Not configured

Default Power Settings Additional #2

Display [Properties](#)

Requirements:
Windows 2000 or later

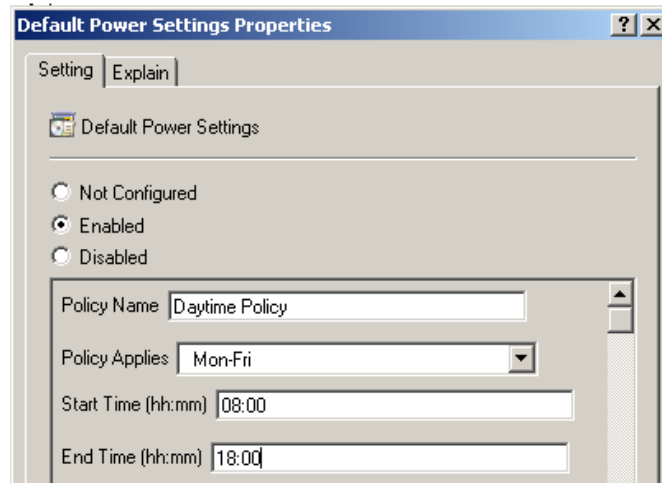
Description:
Power settings that apply to all users (including when nobody is logged on) unless user specific settings are also present. The time settings are in local system time and may be blank.

PowerMAN Documentation

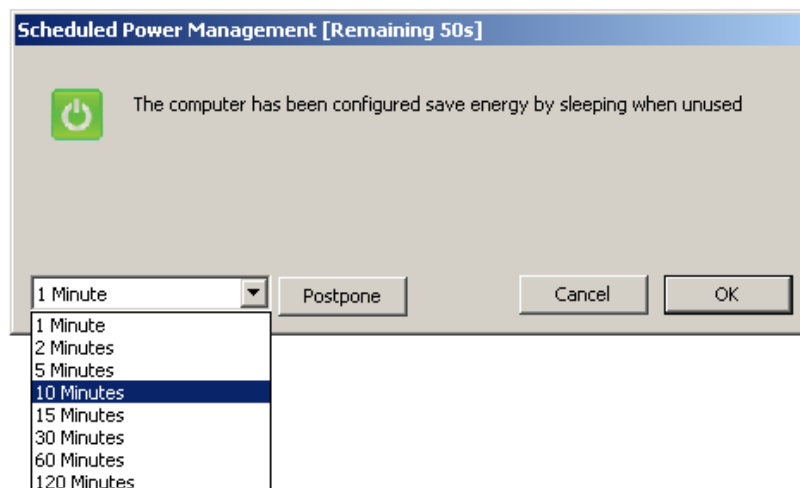
- PowerMAN power policies may now be configured to apply only between certain times on specific days. In addition each policy may be given a custom name which is displayed in the Windows user interface.

This new feature may be combined with the multiple policy feature to create multiple different policies that apply at different times. Policies are always processed in ascending numerical order and the first applicable policy is applied.

To use the new time feature simply configure the applicable time range in the Group Policy editor. If this feature is not required then the time fields may be left blank.



- The scheduled shutdown/sleep/hibernate dialog may now be customised. The administrator may now define the warning text, delay and optionally allow the user to postpone the event until later. The dialog also includes a countdown showing the time remaining:



PowerMAN Documentation

4. PowerMAN now includes an optional user interface. This provides a convenient icon in the system notification area. The administrator may permit the user to:



- a. Opt-out of the managed policy
- b. Keep their system awake (inhibit power management)
- c. View their PC PowerMAN statistics

The icon colour changes to reflect the current status:

Green – Indicates the managed policy is currently active

Grey – Indicates that no managed policy is active (default)

Red – Indicates that a power event has just occurred (for instance resumed)

The icon also supports a number of overlaid symbols indicating current status:



Opt-out – The user has opted out of the managed power scheme



Keep Awake – The user has selected the 'Keep Awake' option. The computer will be prevented from sleeping



Forced Awake – Another program is forcing the system to stay awake. If this is undesirable it is commonly known as 'PC Insomnia'

5. Finally, PowerMAN includes an optional user preference mode.

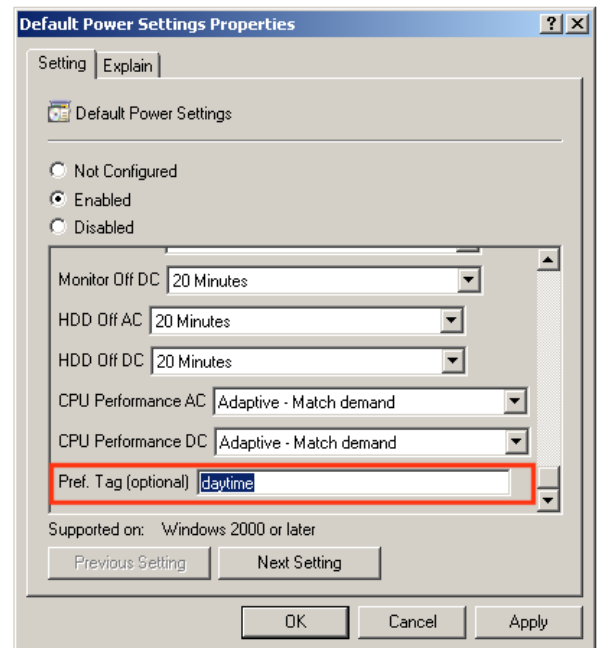
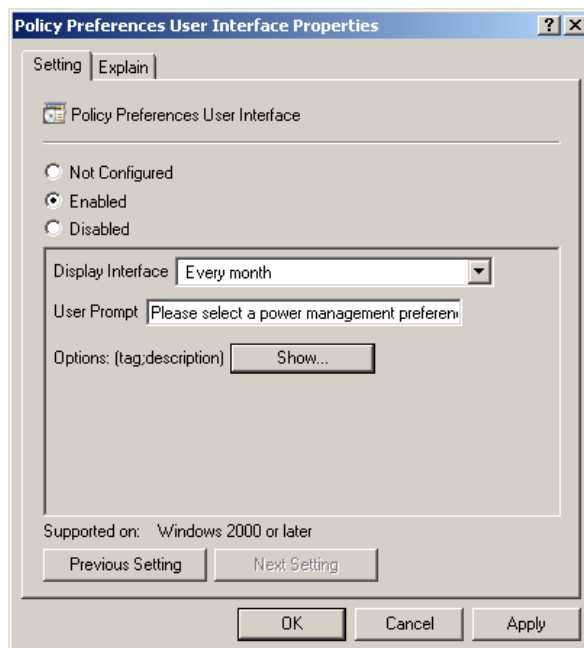
The administrator may specify one or more power policy groups and permit the user to select which group they wish to join. The administrator may configure how often the user is prompted to select a preference group and, at the administrators' discretion, may also use the PowerMAN icon to change their selection:

This feature is intended to increase user acceptance whilst maintaining administrator control over the permitted options. This feature was suggested by the University of Liverpool. The feature can be configured as follows:

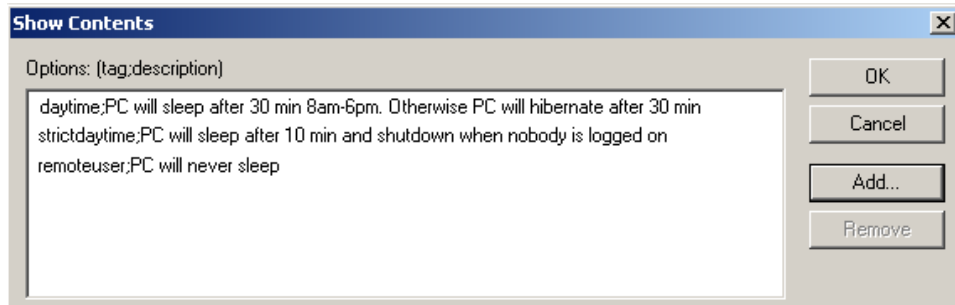
- a. Determine the required power settings and assign each a short 'tag' name.
- b. Configure the required policies as normal and fill in the assigned policy 'tag'.

NB: Multiple Default User, No User and Specific User policies may be tagged with the same name. The normal PowerMAN rules apply and the first applicable policy will apply. This may be used to implement a linked collection of policies that apply at different times and in different situations

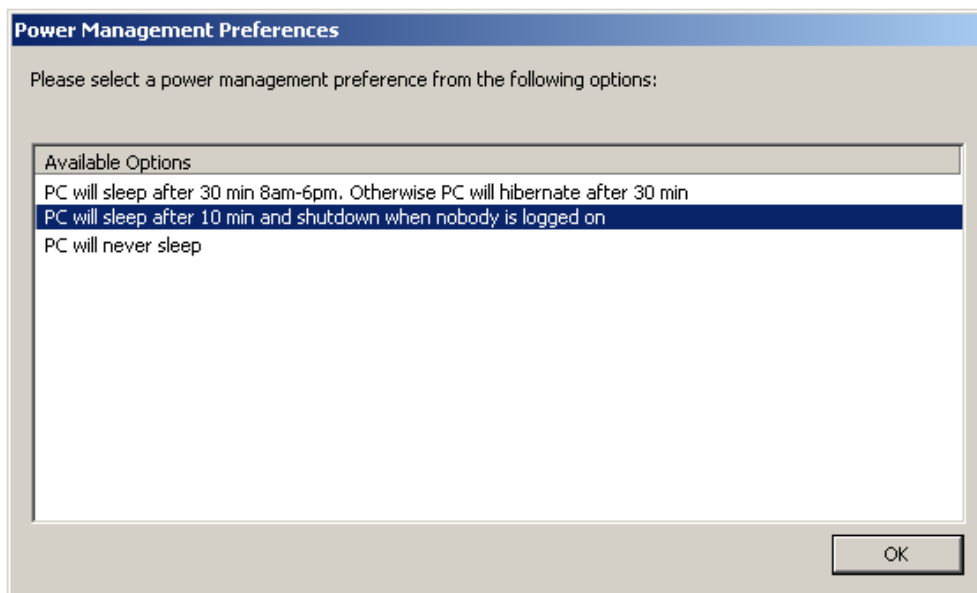
- c. Enable the Policy Preferences feature and configure the user prompt frequency and message



- d. Configure the policy preference interface by clicking the Show button in the Group Policy editor. Enter each policy separating the tag and the description with a semi-colon:



- e. When each user next logs on PowerMAN will invite the user to select an appropriate policy group:



The prompt selection is stored in the user's profile and the user will be invited to re-select their preference at the frequency selected by the Administrator. In addition the user may change their selection at anytime by using the PowerMAN user interface:

