

## PowerMAN Power Manager

### PowerMAN Power Manager Overview

Release 5.4.0 January 2018

*"We estimate this straightforward project, will save the Trust more than 350 tonnes of CO<sub>2</sub> and £70,000 per year...Direct financial savings are achieved by reducing the energy being used by computers being left idle by users." - Phil Brennan, Estates Director, Sheffield NHS Teaching Hospitals*

Data Synergy PowerMAN Power Manager is an advanced software product giving organisations of all sizes a simple, effective and uniform solution to manage PC running costs. PowerMAN complements the built-in power management features of Microsoft Windows® by providing:

- **Comprehensive, centralised, configuration of PC power management**
- **Web-based, enterprise-wide reporting of PC usage and costs**

PowerMAN builds upon the features available in the Windows operating system to deliver power management that maximizes savings whilst avoiding any loss of productivity. The software's innovative approach allows PC power features to be simply managed using familiar Windows tools. This dramatically reduces implementation time and delivers rapid results. PowerMAN's unique web-based graphical system allows both IT and non-IT staff to monitor progress and identify areas for improvement.

*"I only know one power management product that truly addresses our problems...PowerMAN" - Lisa Nelson, University of Liverpool*

PowerMAN is a best of breed solution. The unique combination of effective power management **control** and **measurement reporting** greatly enhances the available savings:



### PowerMAN Benefits

*"This is a great opportunity to save a whole lot of money, but at a low cost" - Merry Rankin, Director of the Office of Sustainability, Iowa State University*

PowerMAN is very cost effective and will deliver effective power management whilst maintaining user productivity. The solution will deliver the following business benefits:

- Save up to 70% of PC energy costs
- Save up to £60 per PC/year
- Simple deployment with typical return on investment (RoI) 3-4 months
- Flexible solution that overcomes common barriers to energy saving

The full product is available with a **free 30 day, no-obligation, evaluation**. This will allow you to fully understand the powerful range of features available and measure the potential savings in your organisation. The evaluation is unlimited and we encourage you to use it on as many workstations as possible. The savings achievable can be estimated using our free, on-line, [savings calculator](#).

## PowerMAN Power Manager

The management software is highly flexible and offers numerous power management policy options:

- Rapid deployment using almost any industry standard technique
- Flexible policies per-user, per-workstation or per-group
- Mix/match techniques to work alongside user requirements and maximize productivity
- Built-in wake-up support for patch management, anti-virus scans, and updates
- Minimally intrusive to users and includes an optional user override tool
- Uniform solution for all supported operating systems

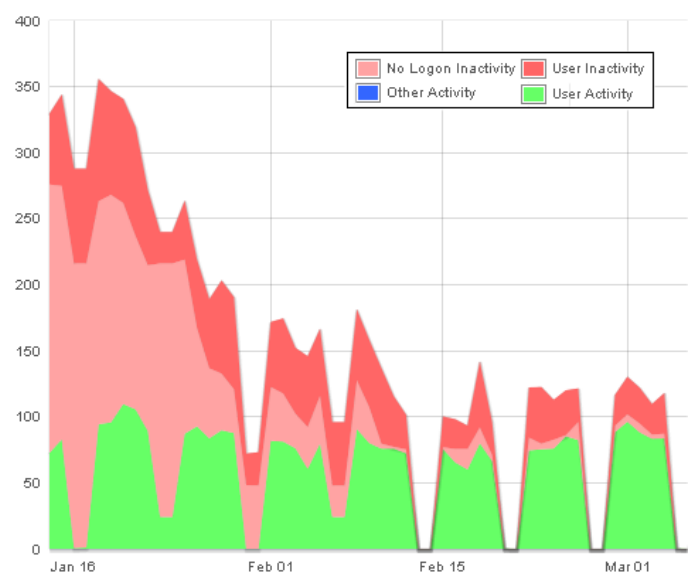
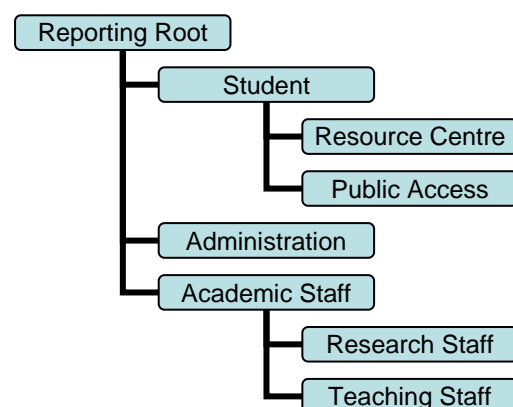
The optional reporting suite provides:

- Management insight of workstation activity, waste and areas of best practice
- Historical and live reporting per area, department or physical location
- Measurement by time, estimated cost or CO<sub>2</sub> equivalence
- Informed decision making based upon reality and **NOT** guess work
- Optional hosted solution for ultra-rapid setup and low implementation cost

## Enterprise PC Power Reporting

The optional PowerMAN web-based reporting solution is available as either **standalone, on-premise, software** or as a **hosted reporting service**. The system reports workstation power usage related information in a variety of easily accessible graphical and tabular formats. Both reporting solutions offer exactly the same reporting features:

- The **hosted (cloud) reporting service** can be setup in minutes and will securely report power statistics directly to Data Synergy's servers. This removes the need for a local server and associated backups. Hosted reporting is **included free for the first year** with all direct PowerMAN purchases.
- The **on-premise PowerMAN Enterprise Server** reporting software is particularly suitable for larger organisations and keeps all information in-house. The system offers an open database model that is ideal for further integration or development of custom queries.



A live demonstration of the reporting solution features is available on the [Data Synergy website](#).

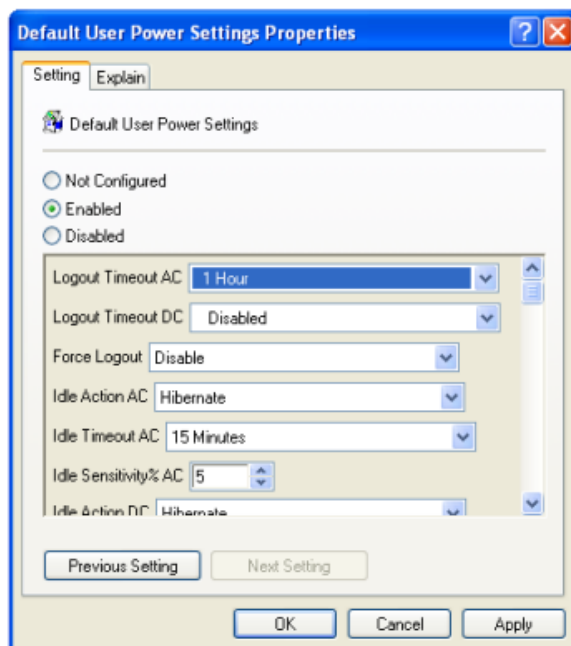
## PowerMAN Power Manager

The reporting solution provides:

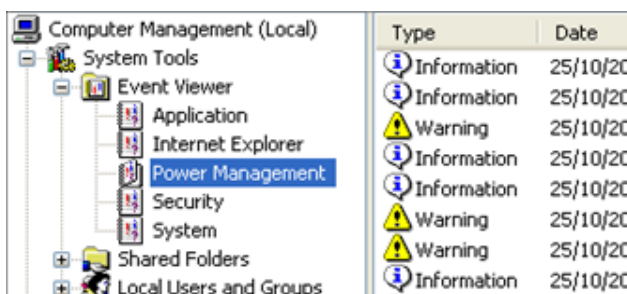
- Historical measurement of efficiency and waste over weeks, months or even years
- Live dashboard of workstation status and availability
- Reports true hours/minutes of activity and estimated cost and CO<sub>2</sub> equivalents
- Groups computers by area, use or location, display summary information and drill-down to individual PCs
- Ranks computers by inactivity level and highlights the most and least wasteful computers
- Displays data graphically and allows data download in Excel compatible format
- Provides multiple access security levels and only collects anonymous data. Does not create any privacy or data confidentiality issues and provides
- Minimal network overhead and storage requirements. There is no practical limit to historic data retention.

## Technical Features and Requirements

PowerMAN is supported on Windows XP and later. The software uses a small agent which may be quickly deployed to each workstation:



- Simple deployment via either standard MSI or single-EXE file. Less than 1MB on-disk required
- Deploy via GPO/AD, ZEN, SCCM, SMS, XCOPY or similar
- ADM/ADMX supplied - Configure via Group Policy, ZEN, SCCM or even direct Registry settings
- Define separate policies per-user, per-computer, group or time of day
- Configure timeouts for logout, sleep, hibernate, and power-off
- Schedule wake-up, sleep, hibernate or power-off
- Distinct policies for when nobody is logged on



- Enforce policies, prevent unauthorised changes and override problem applications preventing PC 'insomnia'
- Protect critical applications, files or times
- Optional opt-out by user and computer. Permit authorised users to self opt-in/out to power management

## PowerMAN Power Manager

The PowerMAN historical reporting solution consumes around 1KB of network bandwidth per workstation per day. The optional live reporting feature requires a further 3-4KB bandwidth/day depending on usage.

The optional on-premise, PowerMAN Enterprise Server, reporting software is highly scalable and supports a minimum of 100,000 client computers. The software does not normally require a dedicated server and supports operation in a virtualised environment. The server software requires the following:

- Windows Server 2003 or later (x86 or x86-64) with at least 2GB of RAM. Larger installations may require more RAM.
- Approximately 1MB of data storage per client computer per year. e.g. 20,000 PCs will require approximately 20GB of storage.
- Microsoft® SQL Server Standard Edition 2005 or later. Smaller deployments may also use the free SQL Express Edition

We also offer a range of [services](#) to help deploy, integrate, and customise PowerMAN in your organisation.

## Better than Windows alone

PowerMAN leads the market because it significantly enhances the features available from Windows alone. This is because:

- Windows XP and earlier do not provide any built-in, centrally configured, power management.
- Windows® Vista-Windows 10 **only provide a single timeout-based power policy to be defined for all users on a particular computer**. This policy applies at all times, can be changed by any user, and remains in effect even when the user logs off. The policy may be easily circumvented by rogue applications causing 'PC Insomnia'

PowerMAN offers many more comprehensive features beyond those present in Windows alone. The following table highlights the key features of PowerMAN compared to Windows XP, Windows Vista/Windows 7/Windows 8 and the Energy Star EZ GPO tool:

Feature	XP	Vista/7/8/10	EZ GPO	PowerMAN v5.4
<b>Historic Reporting per PC/site</b>	No	No	No	<b>Comprehensive</b>
Export reports to Excel/CSV	No	No	No	<b>Yes</b>
SQL access to per-minute data	No	No	No	<b>Yes</b>
<b>Live Reporting per PC/Site</b>	No	No	No	<b>Yes</b>
Per-site workstation availability report	No	No	No	<b>Yes</b>
Workstation status dashboard	No	No	No	<b>Yes</b>
<b>Central power management configuration</b>	No	Limited	Limited	<b>Comprehensive</b>
Sleep / Hibernate (on-idle)	No	Yes	Yes	<b>Multiple/day</b>
Shutdown / Power-off (on-idle)	No	No	No	<b>Multiple/day</b>
Logout (on-idle)	No	No	No	<b>Multiple/day</b>
Sleep / Hibernate (on-schedule)	No	No	No	<b>Multiple/day</b>
Shutdown / Power-off (on-schedule)	No	No	No	<b>Multiple/day</b>
<b>Wake-up</b>				
Maintenance window (Wake + stay awake)	No	No	No	<b>Multiple/day</b>
Wake-up (on-schedule)	No	No	No	<b>Multiple/day</b>

## PowerMAN Power Manager

Wake-up (remote / ad-hoc)	No	No	No	via WakeMyPC
Multiple policies per day/user/PC/group	No	No	No	Yes
Separate policies per user / group	No	No	Yes	Yes
Separate policies per PC / group	No	via GPO	Yes	Yes
Protect from unauthorised changes	No	via GPO	No	Yes
Distinct policy for no-user present	No	No	No	Yes
Enforce policy (anti-insomnia)	No	No	No	Yes
<b>Out-out / Exclusion features</b>				
By file/program/time	No	No	No	Yes
User driven opt-out (optional)	No	No	No	Yes
Detailed Power Management event log	No	No	No	Yes
Full support for Windows Vista/7/8	N/A	N/A	No	Yes
Regular updates available	N/A	N/A	No	Yes

## Evaluate Free Today

We are confident PowerMAN will save you money but we know you will want to see this for yourself. The product is available with a **free 30 day, no-obligation, evaluation**. The evaluation will allow you to fully understand the powerful range of features available and measure the potential savings in your organisation. The evaluation is **unlimited** and we encourage you to use it on as many representative workstations as possible. The typical evaluation cycle is:



Please talk to your Sales Representative to arrange your PowerMAN evaluation today.

## Complementary Tools

Data Synergy provides a range of related software. The following tools complement PowerMAN:

- [WakeMyPC](#) provides a web-based, user-driven, remote desktop access gateway. This allows users to wake their own workstations when required for remote access. WakeMyPC is the ideal companion for PowerMAN and used together will maximize the savings achieved.
- Free [WOLMAN command-line](#) tool for investigating and debugging WoL network issues. This is included with the WakeMyPC Server and is also available directly from the Data Synergy website
- **DMCMOS32 utility** for configuring BIOS features, such as WoL, on large numbers of similar computers

## Further Information

To find out more about **Data Synergy PowerMAN** please talk to your Sales Representative or authorised reseller. Alternatively please read the following documents available on the Data Synergy website:

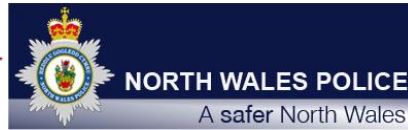
- [PowerMAN Administrator Guide](#) – provides full technical details and several installation walk-throughs
- [PowerMAN Reporting Guide](#) - explains how to use the WakeMyPC Server software.
- [PowerMAN Enterprise Server Guide](#) – explains how to deploy the on-premise reporting suite
- [PowerMAN FAQ](#) – Answers frequently asked product questions

## Our Customers

Data Synergy PowerMAN is already used successfully by a large number of both public and private sector customers. Some examples include:



[www.sro.vic.gov.au](http://www.sro.vic.gov.au)

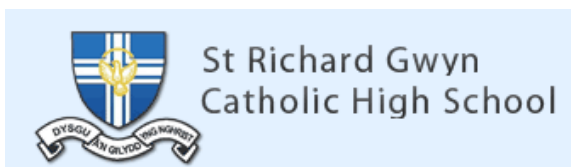


IOWA STATE UNIVERSITY

Manchester Metropolitan University



Rushcliffe Borough Council



## About Data Synergy



Data Synergy is a British company based in Sheffield. We have over fifteen years' experience developing and supporting software solutions for enterprise PC deployment and management. We do not resell other vendors' products and do all of our development, sales and support from our UK base.

Our products have evolved through listening to customer ideas and applying our unrivalled knowledge of PC internals. If you have a suggestion for a new product or feature we would love to talk to you.

**Data Synergy UK Ltd**  
Cooper Buildings  
Sheffield Technology Parks  
Arundel Street  
Sheffield  
S1 2NS

Website: [www.datasynergy.co.uk](http://www.datasynergy.co.uk)  
Email: [sales@datasynergy.co.uk](mailto:sales@datasynergy.co.uk)  
Telephone: 08456 435 035

Registered in England and Wales  
Company Number 06682095  
VAT Registration GB 939 7559 56