

PowerMAN Enterprise Server New Features Guide v5.2

Release 5.2.1 October 2012

Overview

PowerMAN Enterprise Server v5.2 includes several new features. This document provides a brief explanation of these features and is intended for System Administrators already familiar with PowerMAN.

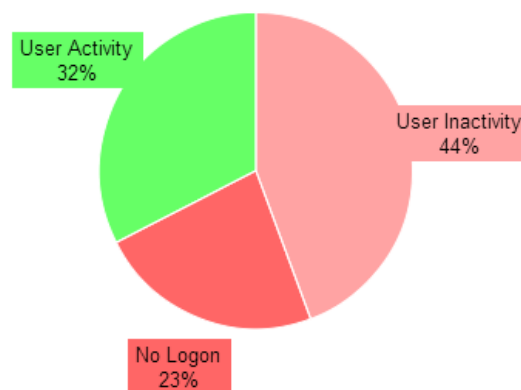
The majority of the new features present have followed feedback supplied by our customers. We remain very grateful to those sites for all the testing and feedback they have provided and hope they will find this release the most functional and reliable yet.

New features in PowerMAN Enterprise Server v5.2

The PowerMAN Enterprise Server v5.2 release includes:

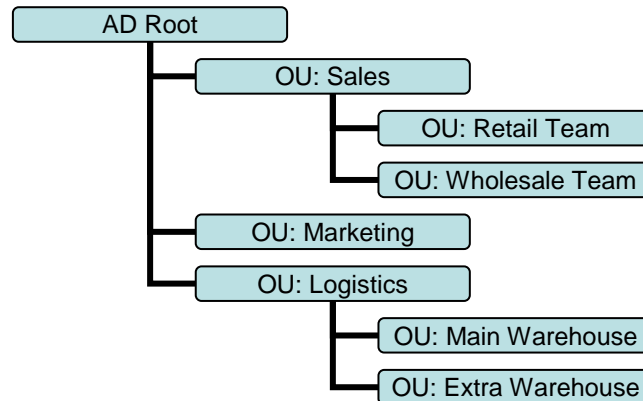
1. Support for > 100,000 workstations per server together with significant underlying performance improvements. Reports now render significantly faster than in previous releases.
2. Reporting site activity is now also displayed in a convenient pie-chart format. This breaks down workstation activity into the most significant components and permits the major causes of workstation energy waste to be quickly understood.

Activity breakdown by type



3. Reporting sites (groups) may now be automatically created based upon the Active Directory Organisation Unit layout (AD OU) “distinguished name”. This feature requires client version v5.2.6 or later. This feature can dramatically reduce initial setup time on large deployments with many sub-sites and create a PowerMAN reporting hierarchy that matches the existing AD. For example:

PowerMAN Enterprise Server v5.2



4. Built-in support for Windows Integrated Authentication is now included. When this feature is enabled reporting system logons are linked directly to Windows domain accounts. No separate PowerMAN password is necessary.
5. PowerMAN reporting system logons may now be configured with a 'home site'. This is the reporting site that is presented to the user upon logon. Optionally users may be prohibited from browsing to parent sites. This may be used to limit reporting access to limited areas of the full reporting hierarchy such as a brand office.
6. The personal statistics feature introduced with PowerMAN client v5.2.x is now supported by the PMES server. This provides a single workstation view that does not permit navigation to the parent reporting site(s).
7. The Computer Summary page has been redesigned to include detailed information about the target workstation including battery support, OS platform architecture, free system HDD space, and disk spin down support.
8. The PMES database timeout can now be configured. Previously this feature was not configurable. Typically a setting of 30 seconds should be sufficient even for very large deployments.
9. The user interface now provides direct access to the PowerMAN server error log. Previously this required access to the underlying database. To access the log use the tab provided on the /Secure page.

PowerMAN Power Manager Server Error Log



Important: The error log is for Technical Support use. It is normal for some errors (especially PostStat logged during normal operation. This does not indicate a fault.

Date/Time	FunctionName	Description
05/09/2011 23:37:50	Throw	Unexpected end of file while parsing Name has occurred. Line 16, position 841.
05/09/2011 21:42:37	Throw	Unexpected end of file while parsing Name has occurred. Line 16, position 841.

PowerMAN Enterprise Server v5.2

- PowerMAN now includes an extended range of reports. The latest release permits a baseline inactivity figure to be specified and savings reports to be automatically calculated against this baseline:

